

Fairy Hill Properties



500 250 0 500 Metres
1,500 750 0 1,500 Feet
Original Map Scale: 1:30,000

Directions From Regina:

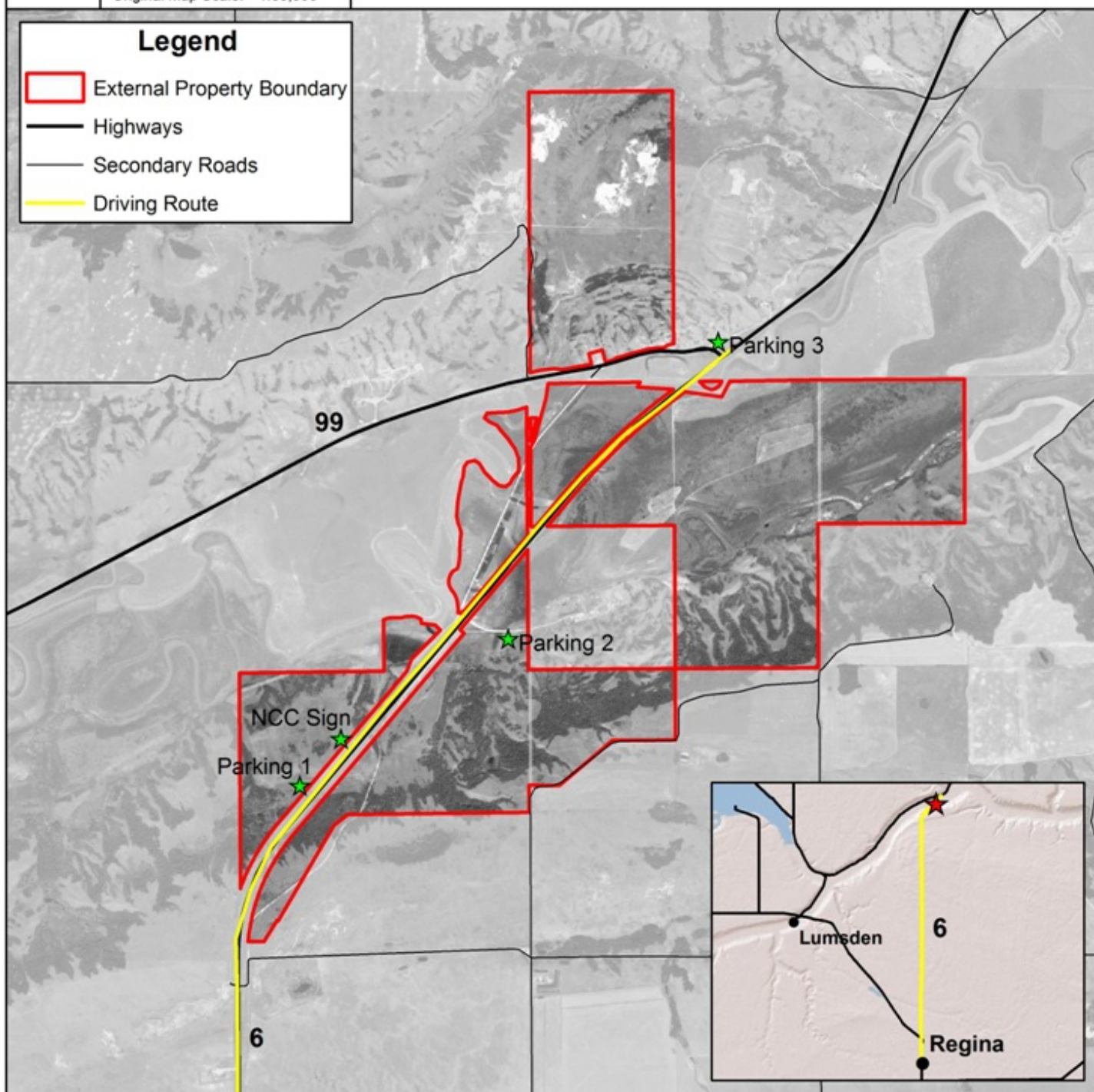
1. Take Hwy 6 north for approximately 36 km.
2. The highway will enter and go down into the Qu'Appelle Valley. 3. The property is off of the highway on the right hand side. If you drive out of the valley or pass Highway 99, you've gone too far.

* Parking is available in several places *

1. Turn on an approach on the NW side of Hwy 6 coming down into the valley. If you pass the NCC sign, you've gone too far.
2. Turn off on the SE side of the highway further down in the valley.
3. Turn off of Hwy 99 on the north side.

Legend

- External Property Boundary
- Highways
- Secondary Roads
- Driving Route



Disclaimer: This map is illustrative only. Do not rely on it as being a precise indicator of privately-owned land, routes, locations of features, nor as a guide to navigation. This map may contain omissions or errors.

SPOT2.5m Panchromatic:
Imagery © 2011 CNES, Licensed by Iunctus Geomatics Corp., Lethbridge, Alberta, Canada Date of Imagery: 2006

Projection: NAD83 UTM Zone 13N

© The Nature Conservancy of Canada 25-February-2013